



wwmartin

Quality Construction Since 1877

NET ZERO CARBON BY 2050 ACTION PLAN

FACT: Net Zero is essential. By reducing carbon emissions, we can stop global warming.

At WW Martin, we recognise the urgency of addressing climate change. Through our Net Zero 2050 Action Plan, we aim to build a more sustainable future.

CONTINUOUS INVESTMENT IN SUSTAINABILITY

We are committed to ongoing investment in new technologies and renewable energy solutions. Examples include EV charging points, solar panels at our head office, and securing grants to support green initiatives.

SUPPORTING LOCAL SUPPLY CHAINS

Partnering with local subcontractors and suppliers in Kent helps to reduce our emissions. This approach also strengthens our Social Value commitments by supporting local businesses.

PROMOTING A CIRCULAR ECONOMY

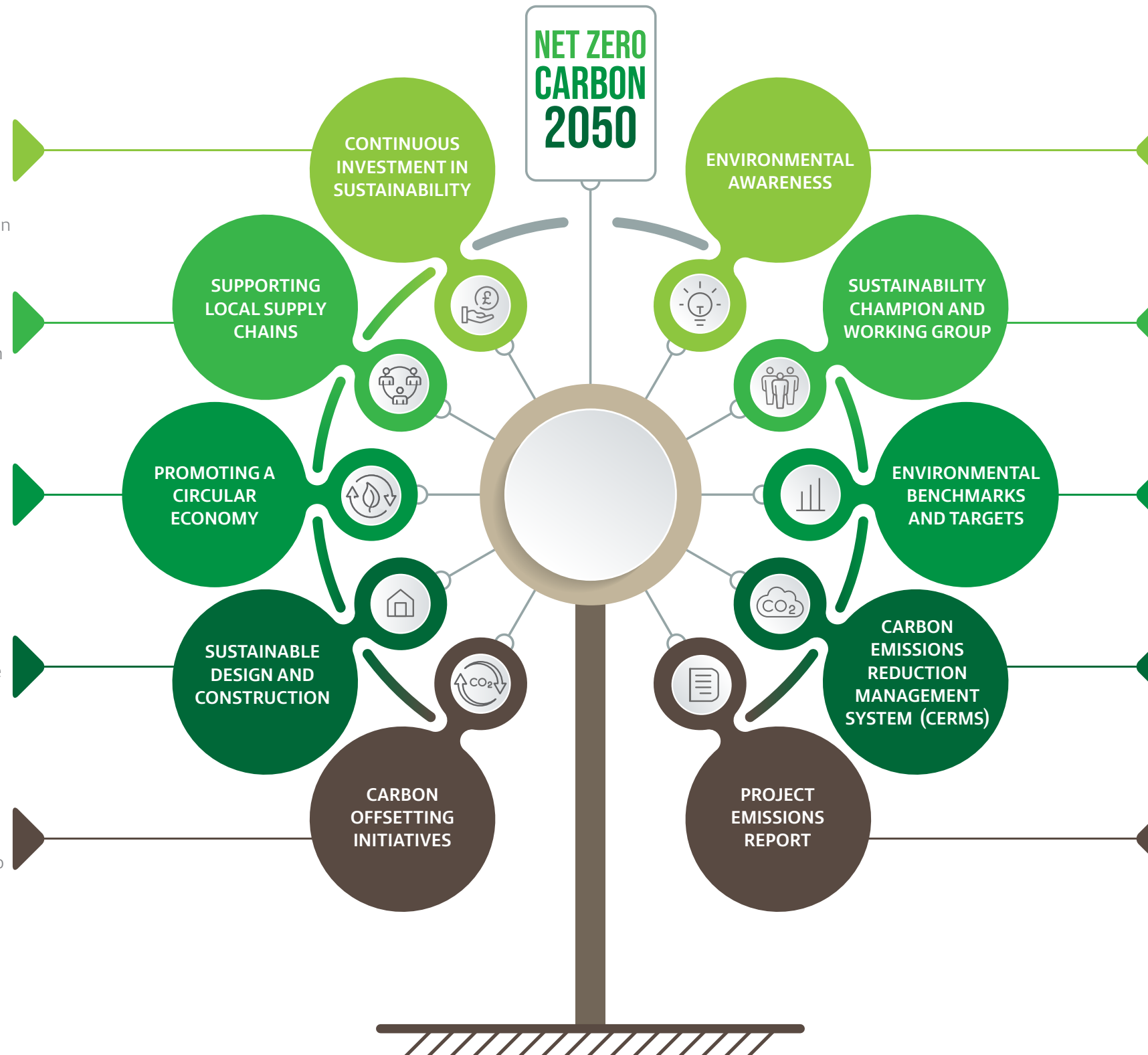
We reduce reliance on raw materials by prioritising sustainable, recycled, and long-life materials. Waste reduction strategies are implemented to lower carbon gas emissions.

SUSTAINABLE DESIGN AND CONSTRUCTION

We leverage in-house expertise to deliver innovative and cost-effective solutions for carbon reduction. This is guided by our Carbon Reduction Design and Construction Procedure, which is part of our ISO14001-accredited management system.

CARBON OFFSETTING INITIATIVES

We partner with local organisations, such as Kent Countryside Partnerships and the Woodland Trust, to offset emissions resulting from our operations.



ENVIRONMENTAL AWARENESS

Collective action is stronger than individual efforts. We provide regular training and engagement with staff, supply chain, and project partners to raise awareness of climate change. WW Martin is proud to commit to the Net Zero Carbon 2050 Commitment, recognised by the UN Race to Zero campaign.

SUSTAINABILITY CHAMPION AND WORKING GROUP

A dedicated team drives our Net Zero commitment and sustainability policies. The group includes members from key disciplines: Board of Directors, Procurement, Design, Pre-construction, Construction, Customer Care, and Supply Chain Management.

ENVIRONMENTAL BENCHMARKS AND TARGETS

We measure and report carbon emissions in line with GHG Protocol Scopes 1 and 2. Meaningful and achievable targets are set, including annual emission reductions, such as a 10% decrease per year.

CARBON EMISSIONS REDUCTION MANAGEMENT SYSTEM (CERMS)

We have implemented SustainIQ, a robust bespoke system to record and report emissions from our business and sites. Focused reduction targets for Scopes 1 and 2 are established, with ongoing reviews of Scope 3 emissions.

PROJECT EMISSIONS REPORT

A structured process is in place to analyse carbon emissions across our head office and construction sites. Regular reviews monitor performance, identify improvements, and highlight best practices.