

# Carbon Reduction Plan (CRP)

## WW Martin Ltd

### Supplier Details

**Supplier name:** WW Martin Ltd

**Registered office address:** Dane Park Road, Ramsgate, Kent, CT11 7LT

**Company registration number:** 00504927

**Contact email:** enquiries@wwmartin.co.uk

**Publication date:** April 2025

**Public availability:** <https://wwmartin.co.uk/policies-practices>

### Commitment to Achieving Net Zero

WW Martin Ltd is committed to achieving Net Zero greenhouse gas emissions across Scopes 1, 2, and 3 by 2050. This is aligned with the UK Government's commitment under the Climate Change Act and supports our own strategic goal to reduce environmental impact through sustainable construction and operations.

### Baseline Emissions Footprint

**Baseline year:** March 2024 – Feb 2025

Emissions reported below reflect WW Martin Ltd's operational emissions for the 2024–2025 reporting period.

Scope	Description	Emissions (tCO <sub>2</sub> e)
Scope 1	Direct emissions: diesel, fuel oil, natural gas, company vehicles	384.92
Scope 2	Indirect emissions from electricity	198.17
Scope 3	Business travel, commuting, waste, water, deliveries	639.55
Total		1,222.64

## Emissions Reduction Targets

WW Martin is committed to reducing carbon emissions year on year. Our long-term targets are to achieve Net Zero emissions for Scope 1 (fuel, gas, fleet), Scope 2 (electricity), and Scope 3\* (indirect sources such as travel, waste, and supply chain) by 2050, with annual reductions driven by improved energy efficiency, sustainable practices, and cleaner technologies.

*\*Scope 3 emissions include the required subset under PPN 06/21, namely: business travel, employee commuting, waste generated in operations, upstream transportation and distribution, and water consumption."*

Emission Source	Target	Target Year
Scope 1	Net Zero emissions from fuel use, gas, and fleet	2050
Scope 2	Net Zero emissions from electricity via green supply	2050
Scope 3	Net Zero emissions from indirect sources	2050

## Carbon Reduction Initiatives

WW Martin has implemented several measures to reduce emissions:

- 100% of waste diverted from landfill in 2024–25.
- Green electricity already used at Head Office.
- Site energy monitoring, LED lighting, and high-efficiency heating.
- Pilot study into solar PV installation.
- Transition to electric vehicles and use of low-emission transport.
- Promotion of walking, cycling, public transport, and car sharing.
- Delivery scheduling to reduce emissions from third-party logistics.
- Increased use of low-carbon and recycled materials.
- Carbon awareness training for all site managers and staff.
- Monitoring and reduction of water consumption across top 10 sites.

## Carbon Accounting Methodology

WW Martin's carbon footprint is calculated using the GHG Protocol Corporate Standard and the UK Government GHG Conversion Factors. Scope 3 emissions include business travel, commuting, waste disposal, water use, and inbound deliveries. All emissions are reported in tonnes of carbon dioxide equivalent (tCO<sub>2</sub>e). The boundary covers all UK operations and project sites.

## Governance and Continuous Improvement

Carbon performance is reviewed quarterly by the Environmental Team & Compliance Team. Annual reports are produced and reviewed. We commit to publishing updates, embedding environmental KPIs into operations, and reporting progress openly.

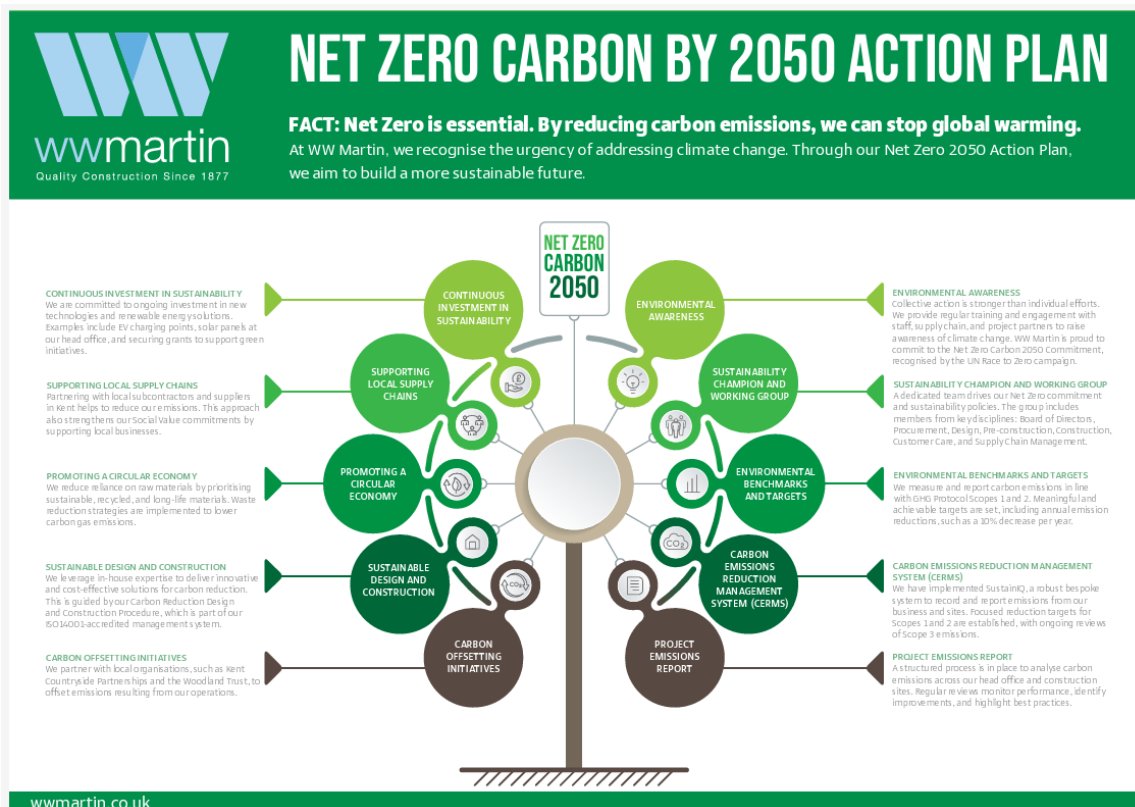
## Declaration and Sign-Off

This Carbon Reduction Plan has been reviewed and approved by the Board of Directors. It will be updated annually and is publicly available on the WW Martin Ltd website.

Signed: Mike Darling

Position: Director

Date: April 2025



WW Martin - Net Zero Carbon 2050 Action Plan